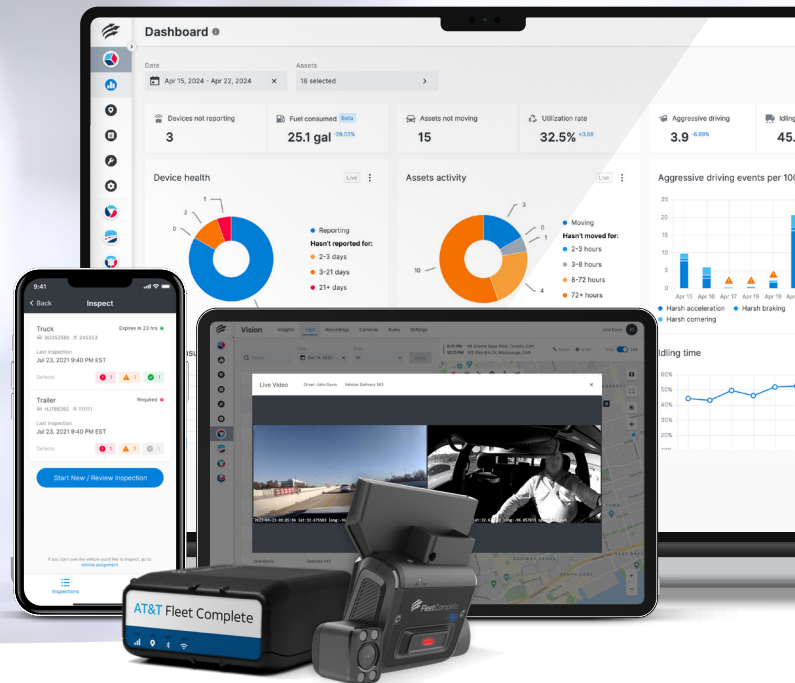


Insights Bundle Suite



Safer operations are in sight when you bundle fleet tracking & connected dash camera starting at just \$39.25/mo!*

(With 10 or more vehicles. Limited time promotion ends Mar 31, 2025.)

GPS Fleet Tracking

Get real-time fleet insights, through Fleet Complete fleet trackers and/or OEM integrated solutions. Make data-driven decisions with quick access to vehicle data, such as location, engine hours, speed, fuel consumption and more.

AI-Powered Dash Camera

Fleet Complete Vision's AI-powered, dual-facing cameras provide best-in-class visibility, so you can detect and correct unsafe driving behavior and mitigate risks for your drivers and vehicles.

* Requires 36-month service agreement. Well-qualified customers only. **If service cancelled before 36 months, \$450 early termination fee applies per line.** Taxes, charges & restrictions apply. See below for offer details.

Starting at just \$39.25/mo!*

(With 10 or more vehicles. Limited time promotion ends Mar 31, 2025.)

Includes



GPS fleet tracking



ELD & HoS



Video telematics



Inspection solutions

Benefits



Efficiency

Optimize your entire fleet operations with vehicle and equipment tracking and telematics. Monitor fleet location, utilization rates, fuel usage, and extend the life of your assets.



Compliance

Streamline your fleet compliance workflows and results for your fleet's hours of service, pre- and post-trip inspections, IFTA reporting, and CSA scores.



Safety

Manage your fleet's safety - on and off the road - with complete visibility and customizable solutions. Keep your drivers safe, your vehicles healthy and your insurance costs under control.



Sustainability

With AT&T Fleet Complete's advanced support for OEM connected electric vehicles and equipment, you can future-proof your fleet with sustainable and scalable solutions.

Get Complete Fleet and Data Insights

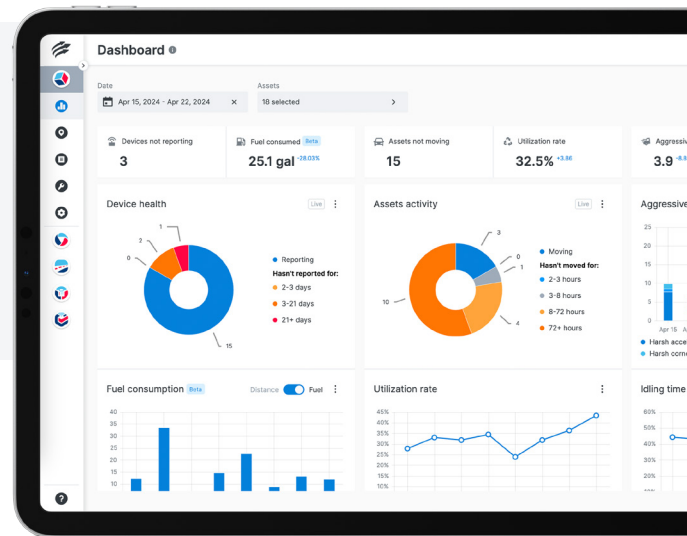
Download the mobile app

Fleet Complete Hub provides easy-to-use web and mobile interfaces, making it easy for you and your team to run your business.



Dedicated Support for Seamless Setup

AT&T Fleet Complete's professional support team simplifies the setup process. Combine custom training sessions with comprehensive guides and on-demand videos to get the most out of your solutions. For seamless self-installation and troubleshooting, download the free FC Install App. Available for **Android** and **iOS** devices.



Want to learn more? Contact your AT&T account representative or visit us at att.com/fleetcomplete

* Avail. to new and existing business customers w/ a qual. wireless svc agmt (Business Agmt) for Corporate Responsibility User (CRU) lines of service. **Eligible Services:** Requires Insights Solution Suite (\$11/mo.) and Fleet Insights Advanced (\$18/mo.) software; AT&T Fleet Complete 1MB (\$1.25/mo.) and 1GB (min. \$9/mo.) data plans. **Eligible Device:** Must purchase FTwx fleet tracker device (\$5/mo.) and camera solution (min. \$12/mo.). Eligible Services and Eligible Devices all require a 36-month agreement. Taxes are extra. **Termination:** A \$450 early termination fee applies to each line terminated prior to the expiration of the then-current term (whether initial or renewal). If service is canceled with any outstanding balance on FTwx device(s), customer must return device(s) within 30 days. **Privacy:** Customer is responsible for notifying its employees and/or users of the tracking and recording features of the Solution and obtaining any and all consents in accordance with applicable laws. Location services are limited to continental U.S., Alaska, and Canada. Coverage is not available in all areas. No refunds. Additional terms can be found at <https://www.welcometoattfleetcomplete.com/eula> and in your specific contract.

Gen. Wireless Svc.: Subj. to applicable Business Agmt (see your AT&T representative for terms). Credit approval req'd. Deposit: may apply. **Limits:** Purch. & line limits apply. **Additional monthly fees & taxes:** Apply per line & include Regulatory Cost Recovery Fee (Up to \$1.50), Administrative Fee (\$1.99), Property Tax Allotment surcharge (\$0.20-\$0.45) & other fees which are not government-required surcharges as well as taxes. Additional one-time Fees may apply. See www.att.com/mobilityfees for more details. Usage, speed, coverage & other restr's apply. International and domestic off-net data may be at 2G speeds. AT&T & FirstNet services subject to AT&T network management policies. See att.com/broadbandinfo for details.

Pricing, terms & restr's subject to change & may be modified or terminated at any time without notice.