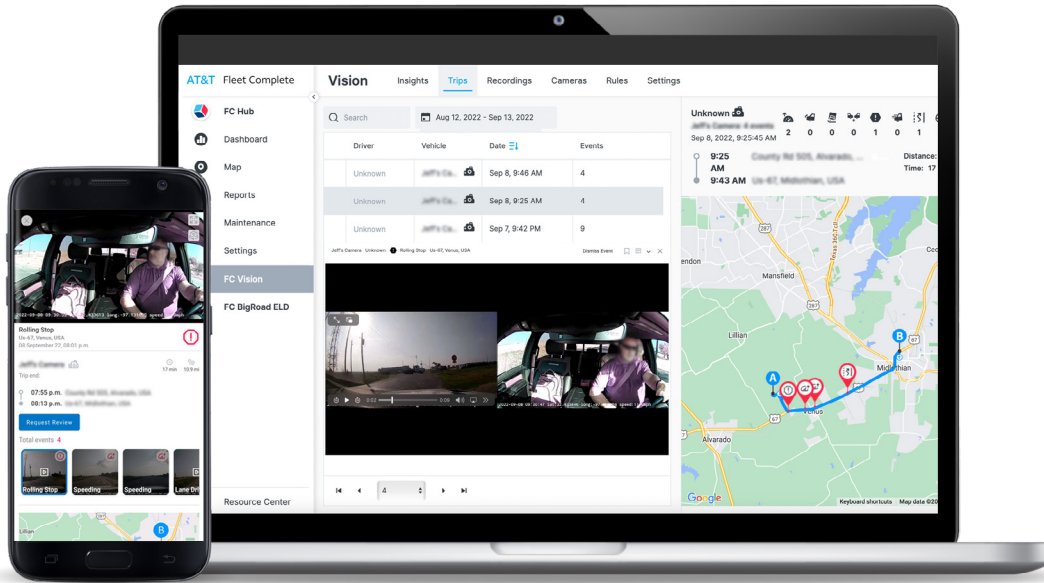


# Fleet Complete Vision

## Raise the bar on driver safety



**Gain near real-time visibility into driver safety and activities with our in-cabin and forward facing video solution. Enhance situational awareness, mitigate risk, and protect your fleet.**

Fleet Complete Vision is a powerful video telematics tool that is part of the Fleet Complete Insights Solution Suite. Its artificial intelligence-powered in-cabin and forward-facing dash cams capture road activities for situational awareness and incident review. Fleet Complete Vision detects external hazards and provides an audio alert for the driver to help prevent accidents. Simply plug in Fleet Complete Vision and begin tracking its data on the mobile app.



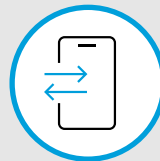
**Help lower insurance premiums**

Powerful AI-based dashcams that help keep public safety safe on the road.



**Provide video footage of incidents**

Dual facing dashcams provide video footage to help support public safety when responding to incidents.



**Easy-to-use dashboards**

Dispatch can conveniently view video footage, vehicle data, and driving analytics.



**Video telematics with AI insights**

Provide vehicle operators with customizable alerts to improve situational awareness.

# Make the connection for safety

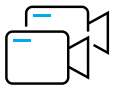
AT&T Fleet Complete Vision, which is now FirstNet Trusted™, wirelessly communicates to a consolidated portal, Fleet Complete Hub. Dispatch can oversee operations or use data from one easy-to-use portal to enhance situational awareness.



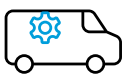
## FirstNet Trusted™ device



**Supports First Priority®** – which provides priority and, for first responders, preemption capabilities



Capture short video events from the dual road and front-facing camera



Access incidents in near real-time, such as a collision, to monitor driver and public safety



Improve the way you manage your agency's fleet by unlocking and maximizing fleet insights with AI-enabled telematics reporting on an all-in-one dashboard view.

To learn more about Fleet Complete Vision, please contact your FirstNet Solutions Consultant or visit us online at <https://www.firstnet.com/industry-solutions/fleet-transportation.html>