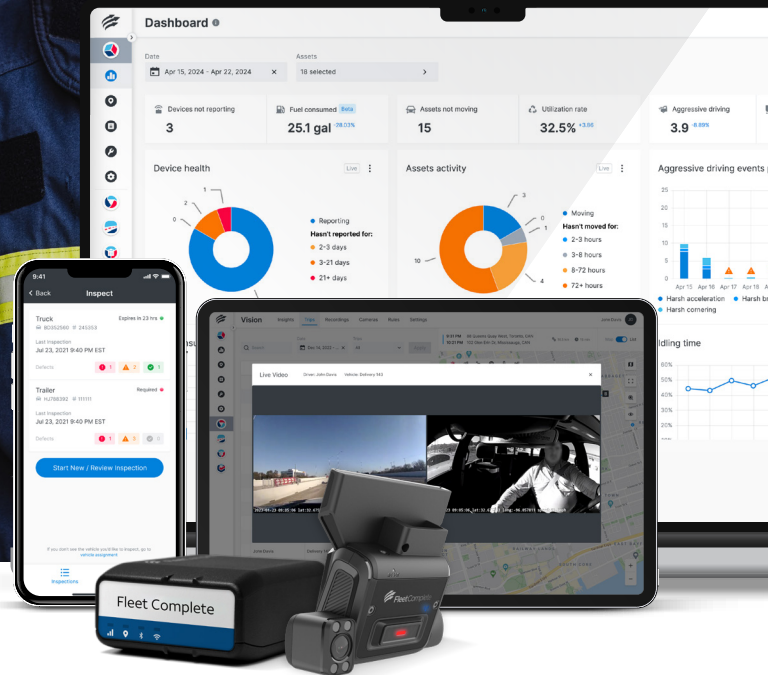


Safer operations are in sight with the Fleet Complete for FirstNet Insights Bundle Suite



**Bundle fleet tracking and connected
dash camera starting at just \$39.25/mo!***

(With 10 or more vehicles. Limited time promotion ends March 31, 2025.)

Powered by Fleet Complete for FirstNet's fully integrated telematics platform, the Insights Bundle Suite is an end-to-end fleet management solution designed to transform near real-time data into mission-critical insights that enhance public safety, improve response times and increase situational awareness.

GPS Fleet Tracking

Gain full visibility into your mission-critical fleet operations through Fleet Complete for FirstNet fleet trackers and/or OEM integrated solutions. Make data-driven decisions with quick access to vehicle data, such as location, engine hours, speed, fuel consumption and more.

AI-Powered Dash Camera

Fleet Complete for FirstNet Vision's AI-powered, dual-facing cameras provide best-in-class visibility, so you can promote safe driving habits and reduce risks for those operating vehicles and the public.

* Well-qualified customers only. Taxes, charges & restrictions apply. See below for offer details.

**Starting at just
\$39.25/mo!***

(With 10 or more vehicles. Limited
time promotion ends Mar 31, 2025.)

Includes



GPS fleet tracking



Video telematics



ELD & HoS



Inspection solutions

Benefits



Efficiency

Optimize your entire fleet operations with vehicle and equipment tracking and telematics. Monitor fleet location, utilization rates, fuel usage, and extend the life of your assets.



Compliance

Streamline your fleet compliance workflows, pre- and post-trip inspections, and vehicle maintenance scheduling with advanced paperless technology.



Safety

Manage your fleet's safety - on and off the road - with complete visibility and customizable solutions. Keep your drivers and the public safe, your vehicles healthy and your insurance costs under control.



Sustainability

With Fleet Complete for FirstNet's advanced support for OEM connected electric vehicles and equipment, you can future-proof your fleet with sustainable and scalable solutions.

Get Complete Fleet and Data Insights

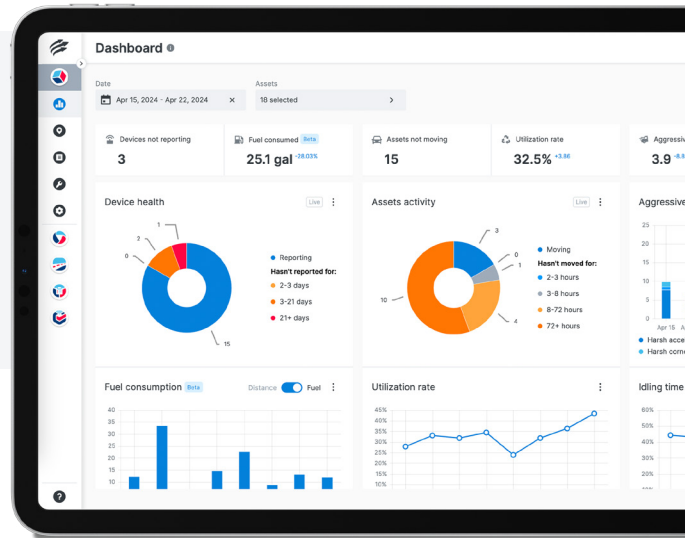
Download the mobile app

Fleet Complete Hub provides easy-to-use web and mobile interfaces, making it easy for you and your team to run your business.



Dedicated Support for a Seamless Setup

The Fleet Complete for FirstNet professional support team is here to ensure a smooth setup process. Benefit from custom training sessions, resources, videos and expert tips to get the most out of your solutions. As your organization grows, our team is ready to support your evolving needs. For easy self-installation and troubleshooting, download the free FC Install App available for **Android** and **iOS** devices.



Contact your FirstNet representative or learn more at: firstnet.com/fleet

Avail. to public safety entities with a FirstNet Service Agmt (Business Agmt) and only for Agency Paid User lines of serv. Subject to availability. Not available in all sales channels. New subscribers must qualify for FirstNet service and complete verification process w/in 30 days. Device must use a FirstNet SIM.

Check elig. at firstnet.com/eligibility. **Eligible Services:** Requires Insights Solution Suite (\$11/mo.) and Fleet Insights Advanced (\$18/mo.) software; Fleet Complete for FirstNet 1MB (\$1.25/mo.) and 1GB (min. \$9/mo.) data plans. **Eligible Device:** Must purchase FTxw fleet tracker device (\$5/mo.) and camera solution (min. \$12/mo.). **Privacy:** Customer is responsible for notifying its employees and/or users of the tracking and recording features of the Solution and obtaining any and all consents in accordance with applicable laws. Location services are limited to continental U.S., Alaska, and Canada. Coverage is not available in all areas. No refunds. Additional terms can be found at <https://www.welcometoattfleetcomplete.com/eula> and in your specific contract.

Gen. Wireless Svc.: Subj. to applicable FirstNet Business Agmt (see your AT&T representative for terms). **Credit** approval req'd. **Deposit:** may apply. **Limits:** Purch. & line limits apply. **Additional monthly fees & taxes:** Apply per line & include Regulatory Cost Recovery Fee (Up to \$1.50), Administrative Fee (\$1.99), Property Tax Allotment surcharge (\$0.20-\$0.45) & other fees which are not government-required surcharges as well as taxes. Additional one-time Fees may apply. See www.att.com/mobilityfees for more details. Usage, speed, coverage & other restr's apply. International and domestic off-net data may be at 2G speeds. AT&T & FirstNet services subject to AT&T network management policies. See att.com/broadbandinfo for details.

Pricing, terms & restr's subject to change & may be modified or terminated at any time without notice.