

Fleet Tracker MGS800

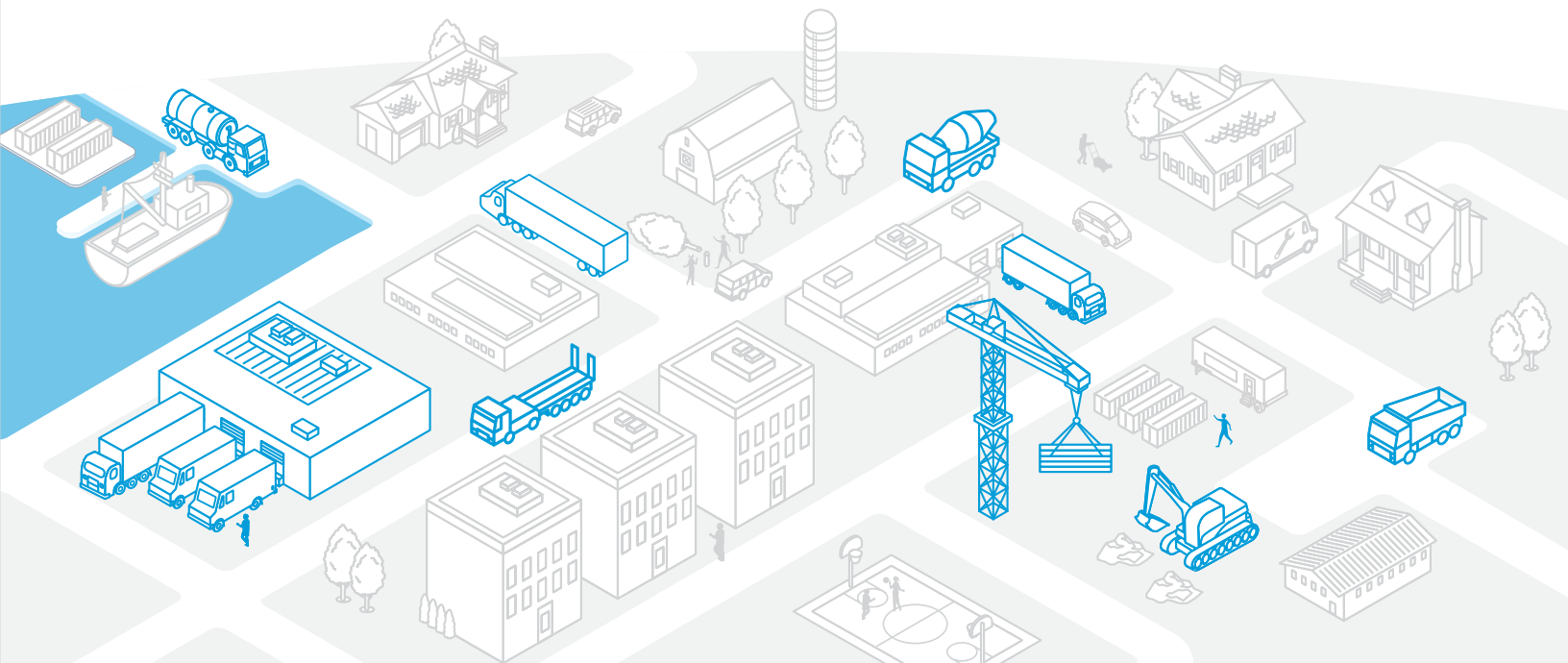
An advanced GPS fleet tracking solution with LTE that provides visibility and insight over your assets and workforce in near real-time

Now you can manage your fleet proactively and respond to your customer needs faster and with increased accuracy. The additional speed of data movement with LTE connectivity enables fast and secure transmission that will future-proof your fleet for years to come.

Get more out of your field staff instantly after a quick professional installation of the Fleet Tracker MGS800. This versatile and feature-rich GPS tracking device provides your fleet managers the best insight into your fleet.

Tackle common fleet issues

- **Monitor driver behavior:** excessive speeding, harsh braking and racing is dangerous and is costing you in maintenance fees and increased fuel consumption.
- **Get insight into your vehicles like never before:** MGS800 integrates with your vehicle's ECM* and delivers you 19 important engine data points.
- **Prolong your vehicle life:** receive instant DTC code alerts or Check Engine notification and schedule vehicle service before critical breakage occurs.
- **Know where your fleet is at all times, even in remote locations:** track your vehicles in remote locations where cellular network is unavailable with our Satellite Failover option**.



Get more with less

The Fleet Tracker improves your operational efficiencies because you are able to monitor, on your desk/lap top, tablet or smartphone, information from the field with our easy-to-use software. When you see what you've been missing you can reduce such things as idle time, off-hours driving, payroll and paid overtime. It reduces wasted time due to increased driver and dispatch efficiency and enhances mobile worker management.

ECM integration

The MGS800 device connects to your vehicle's Engine Control Module through the OBD-II connector and provides your fleet managers accurate vehicle data like true odometer, DTC codes, engine status and fuel economy***. Take full advantage of the DTC rules and reporting to improve your vehicle performance and fleet efficiency.

Advanced reporting

The Fleet Complete platform provides your business the ability to assess your fleet performance and identify opportunities to improve your fleet efficiency. Our robust reporting feature offers 25 operational exportable reports in Excel, PDF, CSV, and other formats. Schedule them on a regular basis or run them on-demand and get the detailed data from the field when you need it. Fleet Complete's live dashboard and brand new power reports provide you the up-to-date comprehensive business intelligence to help you take your business to the next level.

Additional functionalities suited to your needs

Covertly installed in your vehicles, MGS800 monitors your vehicles in the field and offers the option to capture additional data from the sensors such as Power Take Off usage, door status, etc.

- Built-in Bluetooth 2.0 and back-up battery (compatible with ELD)
- Self-install capable with OBD-II/CANBUS, J1939 or J1708 connections
- Ability to be hardwired to a vehicle's power source for additional data collection such as: driver ID Integration, emergency button, temperature sensor, door sensor, and Satellite Failover**



Communication

- LTE/HSPA
- 5-band
 - 4G LTE
 - North America: B2(1900), B4(AWS), B5(850), B12(700), B13(700), B17(700)
 - 3G HSPA+
 - North America: B2(1900), B5(850)
- UDP/TCP/TFTP/SMS
- SIM: Internal, replaceable
- Antenna: Internal multi-band GSM antenna

Inputs & Outputs

- 6 inputs (3 hi, 2 low, 1 analog)
- 2 outputs

Power

- Input voltage: 8 to 30V DC
- Full operating mode: < 100mA
- Active standby: 13mA at 12V DC
- Sleep mode: < 1mA
- Internal Battery: 3.7V 900mAh, rechargeable

Dimensions & Environment

- Dimensions: ~ 5.6 x 2.9 x 0.8 inches
- Weight: ~ 4 ounces
- Temp, operating: -4° - +149° F
- Temp, storage: -40° - +185° F
- Vibration, Impact: SAE J1455

Interfaces

- 3D Accelerometer: Movement detection
- 2 LED status indication
- Connectors: 20-pin 3mm Molex, J1939, J1708 or OBD-II

Default Transmission Rates

- Snapshot every 2 minutes
- Data transmission every 6 minutes
- Configurable

Warranty

- Hardware: 3 years

AT&T Fleet Complete Fleet Tracker MGS800 solution details:

- AT&T Fleet Complete Web Portal
- AT&T Fleet Complete mobile app
- AT&T Data Plan
- Installation Support

Contact your Regional Fleet Complete Expert for more information.

* Available with ECM integration through CANBUS/J1939 connections. * Additional service fee. *** Not available on all vehicle models. Consult Fleet Complete expert for more information.

Important Information

AT&T Fleet Complete® is only available to customers with a Qualified AT&T business or government agreement and a Foundation Account Number (FAN) and their respective CRUs. Activation of an eligible AT&T wireless rate plan on a compatible device is required. May not be available for purchase in all areas or through all channels. Coverage not available in all areas. Availability, security, speed, timeliness, accuracy and uninterrupted use of service are not guaranteed. Not all features available on all devices. Compatible device required for GPS or a GPS derived location information. Activating data blocking features will result in Cell ID or Enhanced Cell ID location information only. AT&T Fleet Complete® is subject to Complete Innovations' additional terms and conditions, including without limitation its software license. Such terms and conditions are available at <http://www.fleetcomplete.com/end-user-license-agreement-for-fleet-complete/>. Additional hardware, software, services, internet access and/or special network connection may be required. Pricing Prices do not include taxes or other fees and are subject to change. Rates are not subject to any additional discounts under any AT&T discount plan. Additional credit and eligibility restrictions apply. Additional charges, terms, conditions and restrictions may apply. Offer and pricing subject to change without notice. AT&T privacy policy may be viewed at www.att.com/privacy.