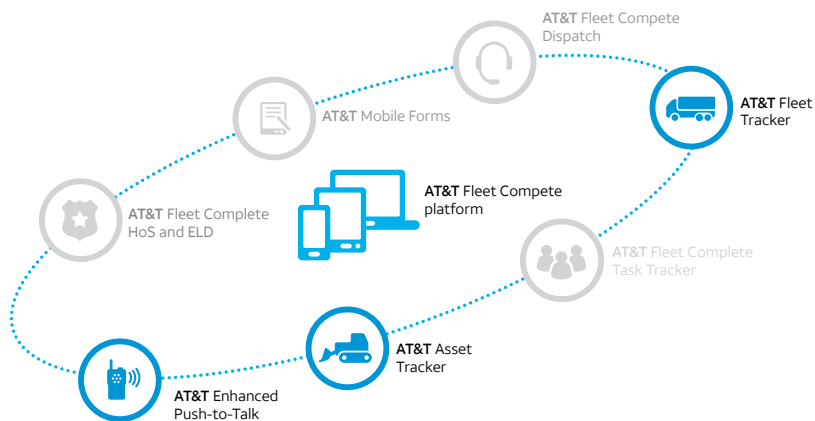




Brief



AT&T Fleet Complete[®] for agricultural and farming services

AT&T Fleet Complete is a unique fleet, asset and mobile workforce management solution. It provides you with the ability to gather real-time location and status from your vehicles and mobile workers in the field, as well as optimize operations in the office and improve your fleet productivity by as high as 50%.

Competitive advantages

- Monitor the current and past locations of all your field vehicles and equipment
- Log the date and time when a field has been cultivated, irrigated or serviced based on the duration of vehicle presence at a particular field
- Monitor PTO (power take-off) usage for accurate fuel tax and other state credit reporting
- Receive notifications of a completed service on each field

More than just fleet tracking

Powered by state-of-the-art GPS technology, the AT&T Fleet Tracker solution provides you with real-time visibility over your fleet and vehicle diagnostics data. The in-vehicle devices can be plugged into the OBD-II/CANBUS, J1939 or J1708 connections or hardwired into your vehicles. They collect important information such as ECM status*, MIL sensor, ignition status, battery voltage and DTC codes* and give the full diagnostic health of every vehicle in your fleet.

* Not available on all devices. Refer to your Fleet Complete regional sales manager for available options.

Advanced asset tracking

Designed specifically for tracking high-value equipment and other assets, the AT&T Asset Tracker solution protects your business against unforeseen losses, lowers insurance costs, and helps you run your organization with confidence. Position reporting and unauthorized movement alerts are just two of the system's features that provide peace of mind. Instead of worrying about expensive equipment location, you can focus on other essential tasks to help grow your business.

Compatible add-ons

AT&T Fleet and Asset Trackers are compatible with wide range of sensors to deliver you valuable business data. Monitor the temperature inside your livestock trailers or track PTO usage on your cranes.

Instant communication with field staff

AT&T Fleet Complete with the AT&T Enhanced Push-to-Talk mobile resource management solution provides an efficient communication add-on to help improve fleet productivity and dispatch operations. Reach out to your field staff or hold a conference with multiple workers in the field with one click.

Extensive reporting

Analyze your business intelligence with the comprehensive Power Reporting and fleet dashboard, or schedule regular operational reports to get a detailed view of your fleet performance, whether captured from GPS, sensors, ECM, events, or interactions of vehicles with Points of Interest such as service shop, gas stations, or any other location of interest.

25 operational reports include:

- **Congregation report** shows your fleet managers all the vehicles and equipment present in one location at one time to help reduce work duplication.
- **Reports on asset activity** include such details as average speed, total distance, moving time, ignition status and can be used for comparing submitted worksheets vs real-life data.
- **Idle report** logs how long assets spend not moving with ignition engaged. Along with power take-off usage report, can be used for accurate fuel tax reporting.
- **And more**, such as position, fleet performance, input, asset temperature, and POI reports...



Key Features & Tips

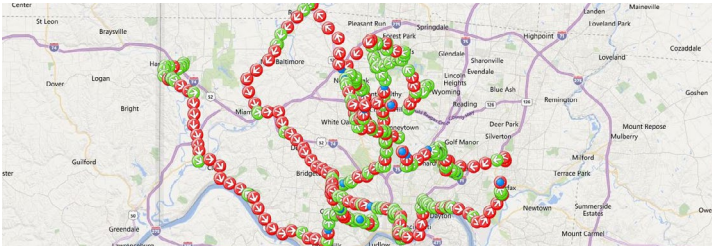
Points of interest and geofencing feature

AT&T Fleet Complete offers fleet managers the ability to add frequently visited locations or outline geographical areas on the tracking map. When a specific equipment and vehicle types (like irrigators or plows) visit the site, a service notification can be sent to team members to help streamline field cultivating activities and log the performed services.



Breadcrumb Trail Report

A Breadcrumb Trail report visually displays the movement of your vehicle or asset during a specific time range allowing your fleet managers to verify if all your fields have been visited by appropriate crews and assets.



Automated Maintenance

AT&T Fleet Complete maintenance module offers the ability to schedule service and maintenance on your equipment and vehicles based on their mileage, operating hours, or seasonally. Keeping your equipment healthy allows you to improve performance of your fleet, lower fuel consumption and prolong the lifetime of your assets.

Please visit www.att.fleetcomplete.com for more information or contact your local AT&T Fleet Complete Regional Sales Manager.

Important Information

AT&T Fleet Complete® is only available to customers with a Qualified AT&T business or government agreement and a Foundation Account Number (FAN) and their respective CRUs. Activation of an eligible AT&T wireless rate plan on a compatible device is required. May not be available for purchase in all areas or through all channels. Coverage not available in all areas. Availability, security, speed, timeliness, accuracy and uninterrupted use of service are not guaranteed. Not all features available on all devices. Compatible device required for GPS or a GPS derived location information. Activating data blocking features will result in Cell ID or Enhanced Cell ID location information only. AT&T Fleet Complete® is subject to Complete Innovations' additional terms and conditions, including without limitation its software license. Such terms and conditions are available at <http://www.fleetcomplete.com/end-user-license-agreement-for-fleet-complete/>. Additional hardware, software, services, internet access and/or special network connection may be required.

AT&T Enhanced Push-to-Talk is available to Customers with a qualified AT&T business or government agreement and their associated corporate responsibility users ("CRUs") and individual responsibility users ("IRUs"). It may not be available for purchase in all areas, and not all service features and functionality are available on all supported devices. Use of AT&T Enhanced Push-to-Talk requires eligible AT&T voice and data services, and acceptance of the End User License Agreement. Additional hardware, software, subscription, and/or special network connections may be required. Availability, security, speed, timeliness, accuracy and reliability of service are not guaranteed by AT&T. Go to att.com/eptt for more details.

Pricing. Prices do not include taxes or other fees and are subject to change. Rates are not subject to any additional discounts under any AT&T discount plan. Additional credit and eligibility restrictions apply. Additional charges, terms, conditions and restrictions may apply. Offer and pricing subject to change without notice. AT&T privacy policy may be viewed at www.att.com/privacy.

06/22/17

© 2017 AT&T Intellectual Property. All rights reserved. AT&T and the AT&T logo are trademarks of AT&T Intellectual Property.

AT&T Fleet Tracker solution details

- OBD-II, CANBUS, J1939, J1708 or in-vehicle hardware
- Additional sensors are available

AT&T Asset Tracker solution details

- Magmount or hardware
- Additional sensors are available

AT&T Enhanced Push-to-Talk integration

- AT&T EPTT plan required
- BYOD, Android

AT&T Fleet Complete Dispatch

AT&T Task Tracker

- BYOD, Android or Apple

