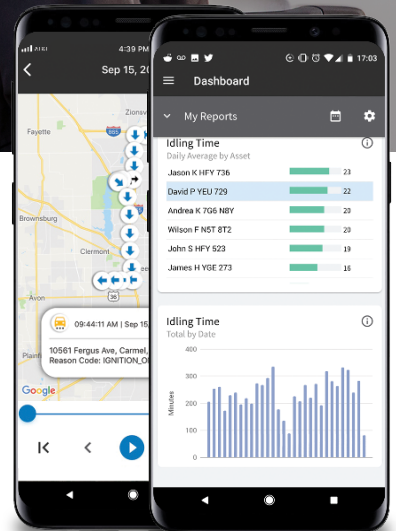


Fleet Tracker 2 Advanced

Fleet management is now much more than dots on the map!



\$199.99 FT2 Hardware Cost **\$18** /month Advanced **\$4** /month 10mb of Data*

Standard Features:

- GPS and time stamp of vehicle location
- Driver behavior reports and dashboards
- Driver Safety Scorecard tracking
- Maintenance tracking based on mileage
- Crash detection

Advanced Features:

- 20+ engine data points, such as RPM, oil/coolant temp, VIN, brake pedal pressure, fuel economy, true odometer, etc.
- Engine diagnostic trouble code (DTC) tracking
- Fuel economy per trip

Contact your Fleet Complete Representative for a free demo today.

Important Information

*Rate plans included. Rate plans other than those advertised are available. Additional plans are available for more frequent reporting. OBD-II or J1939 9 Pin power cable is an extra charge with the FT1. Other cables are also available at additional cost. Professional installation is available at an additional cost. Consult with our expert for your specific business needs. Phone hardware not included. Pricing does not include taxes and other applicable fees.

© 2022 AT&T Intellectual Property. FirstNet and the FirstNet logo are registered trademarks of the First Responder Network Authority.



Fleet



Trailers



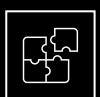
Workforce



Dispatch



Internet



Integrations