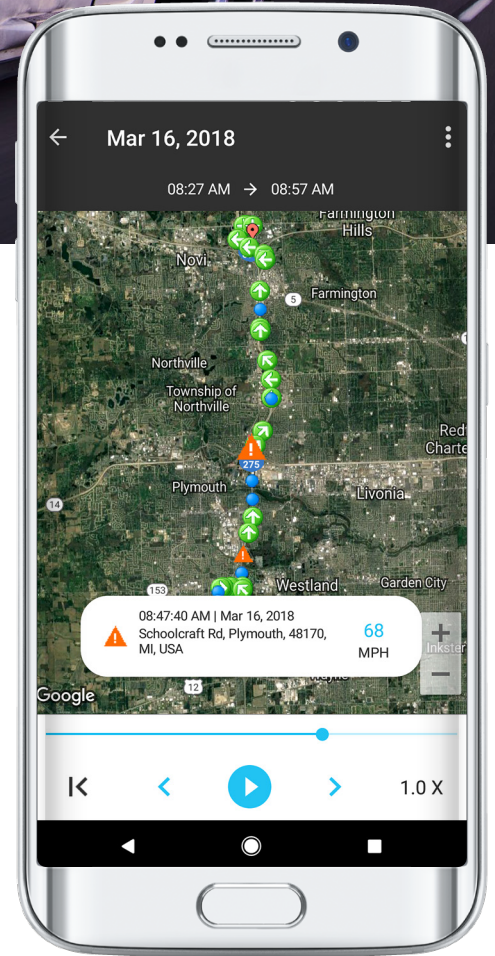




AT&T Fleet Complete for trucking companies



- **Fleet location:** AT&T Fleet Complete vehicle tracking solution captures and provides near real-time location of vehicles and assets, allowing fleet managers make on demand business decisions.
- **Ignition status:** Connecting directly to the vehicle's power source, the tracker captures and logs every time ignition is turned on and off, thereby monitoring start and end of the trip and idling duration.
- **Geofencing:** AT&T Fleet Complete Point of Interest virtual fencing allows fleet managers to identify if the vehicle leaves a certain area and monitor congregation of assets at one or more location.
- **Maintenance module** enables fleet managers to schedule reminders for regular fleet maintenance based on mileage keeping all vehicles in optimal health and minimizing downtime.
- **Reporting:** Analyze your business intelligence from the fleet dashboard, or schedule regular operational reports to get a detailed view of your fleet performance. Get reports on asset activity, distance, idle, speed and other driver behaviors.

Contact Your Regional Fleet Complete expert for more information.

Business Solutions



Important Information
 AT&T Fleet Complete® is only available to customers with a Qualified AT&T business or government agreement and a Foundation Account Number (FAN) and their respective CRUs. Activation of an eligible AT&T wireless rate plan on a compatible device is required. May not be available for purchase in all areas or through all channels. Coverage not available in all areas. Availability, security, speed, timeliness, accuracy and uninterrupted use of service are not guaranteed. Not all features available on all devices. Compatible device required for GPS or a GPS derived location information. Activating data blocking features will result in Cell ID or Enhanced Cell ID location information only. AT&T Fleet Complete® is subject to Complete Innovations' additional terms and conditions, including without limitation its software license. Such terms and conditions are available at <http://www.fleetcomplete.com/end-user-license-agreement-for-fleet-complete/>. Additional hardware, software, services, internet access and/or special network connection may be required. Pricing. Prices do not include taxes or other fees and are subject to change. Rates are not subject to any additional discounts under any AT&T discount plan. Additional credit and eligibility restrictions apply. Additional charges, terms, conditions and restrictions may apply. Offer and pricing subject to change without notice. AT&T privacy policy may be viewed at www.att.com/privacy.