

PT100 Asset Tracker

A reliable solution to safeguard your vulnerable assets.

Does your company own assets in remote locations? Does your organization deal with first response or maintaining public order? The state-of-the-art PT100 Asset Tracker solution will help ensure the safety of your assets any time and anywhere.

This comprehensive solution incorporates sensor readings, location tracking, and reporting modes that scale to your immediate needs and requirements. With cellular communication (2G/3G/LTE) for remote monitoring, you get near real-time visibility of your assets on one interface. It also integrates seamlessly with the Fleet Complete platform for a holistic overview of your fleet and assets for safe and secure operations.

Technical specifications:

PT100 device: small, lightweight device

Network: 2G/3G/LTE cellular, 2.4GHz wireless communication

Environment: Motion-activated sensors; internal antenna; outdoor usage only

Battery: Li-Ion Polymer, 3.7V, 1000mAh, rechargeable

Sensitivity (tracking): -165dBm

Accelerometer: 3D, ±8g range, 4mg resolution, I2C interface, detection of stationary or movement state

Impact: Impact/Free fall with threshold up to 8g

Temperature: -4°F to +140°F full performance

Certifications: AT&T certified

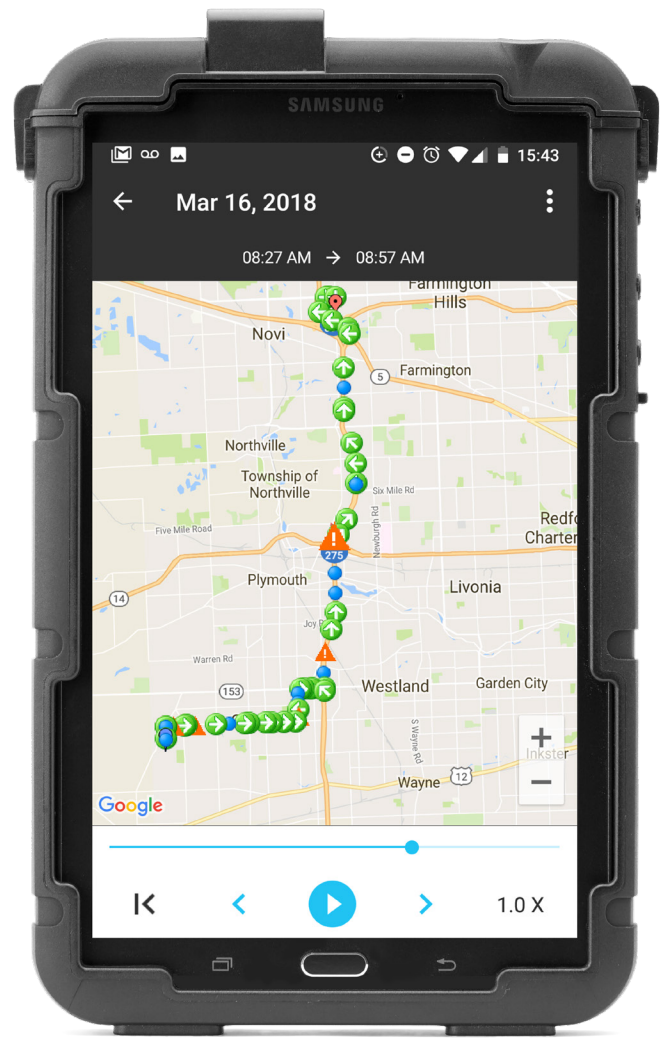


Emergency Management

The PT100 device provides a quick and intuitive way to indicate distress in emergency situations. Activating a panic button, or relying on the 3D accelerometer profile that automatically indicates suspicious activity, will immediately alert the head office of distress and where it is coming from to allow ample time to send help on its way.

Functionality

The device's motion sensor will activate once movement is detected. Transmission frequency can be configured to as often as every four seconds when necessary, and after a period of standstill, the device will go into 'sleep mode' to save battery life.



Battery Charge

A single charge can last 10 – 24 hours, depending on the transmission frequency and the amount of movement.



Capabilities

The device notifies of impact, movement or standstill.



Integration

Fully integrated cross-platform display for optimal visibility and safety monitoring.

Contact your Regional Fleet Complete Expert for more information.

AT&T Fleet Complete PT100

Included:

- PT100 Asset Tracker device
- AT&T Fleet Complete Web Portal
- AT&T Fleet Complete mobile app
- AT&T Data Plan

Important Information

AT&T Fleet Complete® is only available to customers with a Qualified AT&T business or government agreement and a Foundation Account Number (FAN) and their respective CRUs. Activation of an eligible AT&T wireless rate plan on a compatible device is required. May not be available for purchase in all areas or through all channels. Coverage not available in all areas. Availability, security, speed, timeliness, accuracy and uninterrupted use of service are not guaranteed. Not all features available on all devices. Compatible device required for GPS or a GPS derived location information. Activating data blocking features will result in Cell ID or Enhanced Cell ID location information only. AT&T Fleet Complete® is subject to Complete Innovations' additional terms and conditions, including without limitation its software license. Such terms and conditions are available at <http://www.fleetcomplete.com/end-user-license-agreement-for-fleet-complete/>. Additional hardware, software, services, internet access and/or special network connection may be required. Pricing. Prices do not include taxes or other fees and are subject to change. Rates are not subject to any additional discounts under any AT&T discount plan. Additional credit and eligibility restrictions apply. Additional charges, terms, conditions and restrictions may apply. Offer and pricing subject to change without notice. AT&T privacy policy may be viewed at www.att.com/privacy.