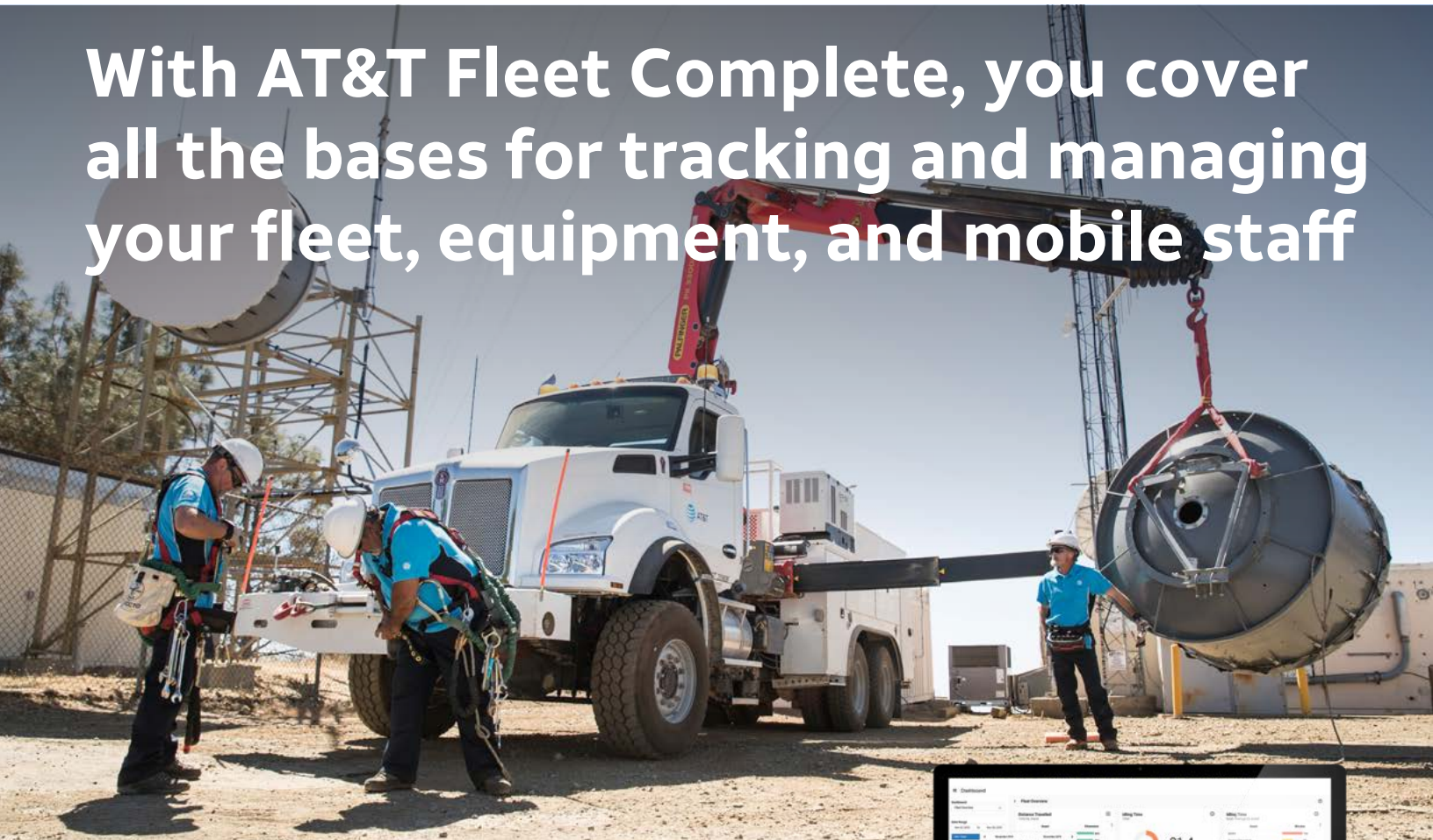


# With AT&T Fleet Complete, you cover all the bases for tracking and managing your fleet, equipment, and mobile staff

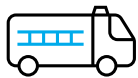


## OPUS Information Sheet

Use OPUS to order an FT1, AT1 Solar, and/or Harman Spark that:

- does NOT require accessories, cables, ELD, and/or professional install
- is for a light-duty vehicle
- requires an OBD-II connection

For all other products, reach out to your AT&T Fleet Complete RSM.



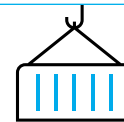
### Core Fleet Solution

- Essential capabilities
- Near real-time GPS tracking
- Band 14 FirstNet® Ready
- Wi-Fi hotspot
- Easy plug-and-play installation



### Advanced Fleet Solution

- Expanded capabilities
- Near real-time GPS tracking
- Monitor idle time, vehicle health & driver behavior
- ECM data and DTC error codes
- Easy plug-and-play installation



### Equipment & Inventory

- Asset tracking for high-value equipment
- Unauthorized movement alert
- Perfect for end-of-day inventory check
- Extensive battery life
- Compact size

Helping Businesses

|                     |              |                                |                          |                        |                         |                  |
|---------------------|--------------|--------------------------------|--------------------------|------------------------|-------------------------|------------------|
|                     |              |                                |                          |                        |                         |                  |
| Improve Performance | Reduce Costs | Maintain Regulatory Compliance | Enhance Customer Service | Enable Safe Operations | Utilize Excess Capacity | Generate Revenue |

Harman Spark



Harman Spark is a core fleet management solution for those looking to optimize and add efficiency to their operations. Now, you can monitor all vehicles on one interface in near real-time and add transparency to areas of concern. Its compatibility with the FirstNet™ network and Band 14 makes this an ideal solution for those who support first responders in an event of an emergency. You can share the network with additional devices through embedded Wi-Fi hotspot.

Harman Spark

\$99.<sup>99</sup> upfront<sup>1</sup>  
 \$12.<sup>99</sup> monthly  
 \$2.<sup>00</sup> 5mb data

\*Wi-Fi may require additional data plan

FT1



Fleet Tracker FT1 is an advanced fleet management solution for those who are looking for wider variety of features and more detailed performance reports. With this engine-connected device, you get access to rich vehicle data, as well as driver behavior analytics. Using these added insights, you can boost driver safety programs, eliminate wasteful patterns to save costs, and improve the resale value of your vehicles.

FT1 Advanced

\$0 upfront  
 \$18.<sup>00</sup> monthly  
 \$1.<sup>25</sup> 1mb data

FT1 Standard

\$0 upfront  
 \$12.<sup>99</sup> monthly  
 \$1.<sup>25</sup> 1mb data

AT1 Solar



One of the smallest and most cost-effective trackers on the market, Asset Tracker AT1 protects your expensive equipment and tools from being misplaced or stolen. You can instantly locate and check the status of machinery, equipment, cargo, and more – all from your mobile device! Outfitted with a solar battery, it will ensure signal longevity, crucial for assets left in remote, hard-to-reach areas.

AT1 Solar Bundled

\$0 upfront  
 \$9.<sup>75</sup> MRC  
 \$1.<sup>25</sup> 1mb data

AT1 Solar Unbundled

\$81 upfront  
 \$6.<sup>75</sup> MRC  
 \$1.<sup>25</sup> 1mb data

Contact your Fleet Complete Representative for next steps or questions:

Important Information

FT1 and AT1 require a 36-month contract. The ETF is \$250. The prices herein may change without notice. Data overages fees may apply and will vary based on the data plan.

<sup>1</sup> One time credit of \$99 will be applied to the AT&T bill to offset hardware costs.

05/19/21

© 2021 AT&T Intellectual Property. AT&T, Globe logo are registered trademarks and service marks of AT&T Intellectual Property and/or AT&T affiliated companies. All other marks are the property of their respective owners.