



A NEW WAY TO MEASURE AND IMPROVE YOUR OPERATIONS

Our asset tracker portfolio opens more possibilities for you and your department than ever before. Track use, location, and operations hours to optimize your Total Cost of Ownership (TCO). Have full visibility of your assets' use and downtime, so you can measure, learn, and improve your operations in near real-time.



© 2021 AT&T Intellectual Property. FirstNet and the FirstNet logo are registered trademarks of the First Responder Network Authority. All other marks are the property of their respective owners.



Key Features

Streamlined platform

Our user-friendly platform is optimized to provide quick access to the most important asset management tools, all from one screen.

Powerful reports

Standardize data and use automated reports to compare the usage of equipment to identify improvement opportunities in your daily operations.

Improve efficiency

Know when and for how long your assets are being used, optimizing your inventory and resources management.

Custom environmental reporting

Rule-based reporting on location, humidity, light exposure, and temperature status.

Theft protection

Customized alerts let you know when assets leave or arrive at a given area so you can protect your equipment integrity and collaborate with authorities to quickly recover them in case of theft.

Enhance asset awareness

Take your operations to the next level by gaining notifications of assets in near real time. Get alerts when equipment is being moved or in transit.

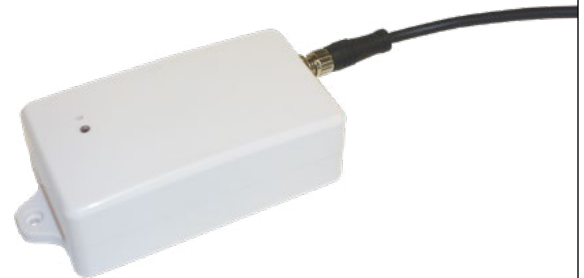
Multiple Hardware Options

Asset Tracker AT1

Solar



Wired



Asset Tracker AT1 LTE-M provides you insight over your high-value assets in the field. Quickly locate and check the status of machinery, equipment, tools and toolboxes, cargo, and more, all from your mobile device.

Scan to request more information



CONTACT INFORMATION

NAME:

TITLE:

PHONE:

EMAIL:

25/10/2021

© 2021 AT&T Intellectual Property. FirstNet and the FirstNet logo are registered trademarks of the First Responder Network Authority. All other marks are the property of their respective owners.