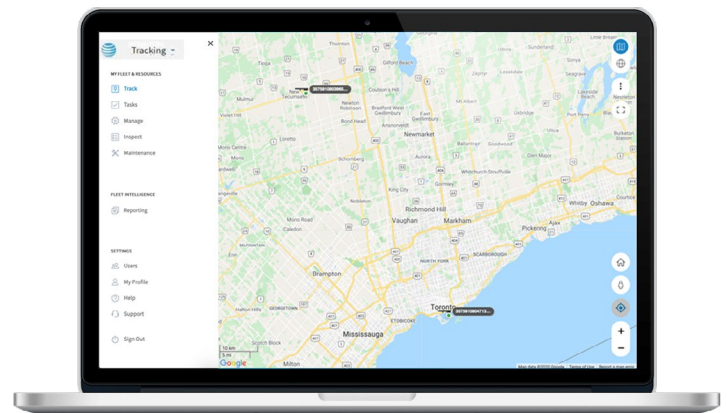




AT&T Fleet Complete Asset Tracker

# See into every corner of your operations

The newly redesigned AT&T Fleet Complete asset tracker interface provides you with a streamlined user experience, customized to meet your asset management needs. With operations efficiency in mind, our platform helps you to manage multiple assets in different locations from one screen, providing you with a birds-eye view of your entire operations, so you don't miss anything.



Business Solutions



Fleet



Asset



Trailers



ELD



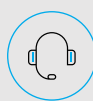
Workforce



Tasks



Dashcam



Dispatch



EPTT



Internet



Integrations

**Key features**

**Streamlined platform**

Our user-friendly platform was optimized to provide you quick and simple access to the most important asset management tools, all from one screen.

**Powerful reports**

Automated and customized reports help you identify continuous improvement opportunities on your operations.

**Work Smarter**

Know where your assets are at all times, optimizing your inventory management tasks and eliminating unnecessary yard runs.

**Reduce equipment misuse**

Ensure proper asset allocation with GPS location monitoring and mitigate equipment use outside working hours customized with engagement alerts<sup>1</sup>.

**See virtually everything and where it is**

Customized alerts let you know when your assets leave or arrive at a given area so you can protect your equipment integrity and support authorities to quickly recover them in case of theft.

**Improved customer service**

Easily identify assets and location to ensure proper equipment allocation to your customers with the most up-to-date information.

**Maintenance management**

Set periodic inspection alerts by time or distance<sup>1</sup> to help you preserve your assets and optimize maintenance.

**Lifetime training and support**

Have access to lifetime training on our platform to ensure you are making the most of our platform.

**Flexible and scalable**

Supported by different hardware options, we help you with all your tracking needs.

**Asset Tracker AT1**

**Asset Tracker AT1 provides you competitive insight over your high-value assets in the field. Quickly locate and check the status of machinery, equipment, tools and toolboxes, cargo, and more, all from your mobile device.**

**Technical specifications**

- Battery**  
~ 1500 pings on full charge; recharges under direct sunlight; 35-50 hours to full charge
- Humidity**  
Absolute accuracy ±3% Relative Humidity
- Temperature**  
-40 to +185° F; Absolute accuracy ±0.9° F
- Light**  
Solid and white translucent variant for light sensitivity
- Enclosure**  
IP67 rugged water and dust proof

**Contact your Regional Fleet Complete Expert for more information.**

<sup>1</sup>Asset Tracker AT1 Wired required.