



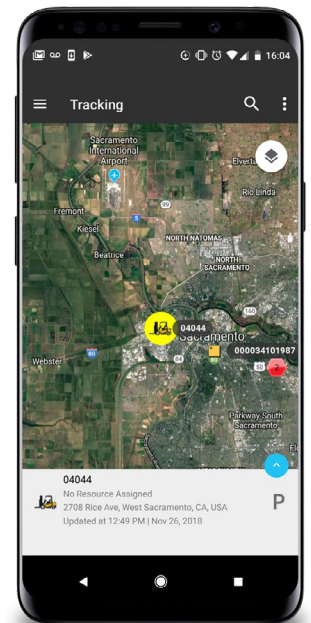
Asset Tracking Technology For A Strong Inventory System


Know where your cargo is at all times






Locating chassis that moves from terminal to terminal is a big challenge for ports and can cause significant delays, negatively impacting inventory management. Our asset tracking technology, AT1, allows you to follow the exact location of your cargo and shipping containers in near real-time on one screen, enabling you to effectively manage the logistics behind the movement of assets, as well as the inventory.

Features



- Office back-end
- Unlimited AT&T Fleet Complete user accounts
- Browser-based
- 1–3 complementary training sessions
- Wired AT1 with rechargeable battery
- External Power (Input) 6–40V DC, will recharge internal battery at 100mA charge rate
- With no power source = 1,500 pings on a full charge
- 9 feet of cable (AT1 Hardwired)





-  **Battery:** 1,500 pings on full charge; 35–50 hours to full charge
-  **Humidity:** Absolute accuracy $\pm 3\%$ relative humidity
-  **Temperature:** -40 to +185° F (-40 to 85° C); absolute accuracy $\pm 0.9^\circ$ F ($\pm 0.5^\circ$ C)
-  **Light:** Solid and white translucent variant for light sensitivity
-  **Enclosure:** IP67 rugged water and dust proof

Asset Tracker Devices

Feature	AT1 Solar	AT1 Wired
		
LTE-M	✓	✓
Antenna	Internal	Internal
Operating Temperature	-30° C — +65° C -22° F — +149° F	-30° C — +65° C -22° F — +149° F
Rechargeable Battery	✓	✓
Battery Life (Based on a full charge)	1,500 events	1,500 events
Battery Recharge Temperature	0° C — +45° C 32° F — +113° F	0° C — +45° C 32° F — +113° F
Enclosure	IP67	IP67
Power Sources	Lithium-Polymer battery	Lithium-Polymer battery
Warranty	1 yr.	1 yr.

Contact your Regional Fleet Complete Expert for more information.