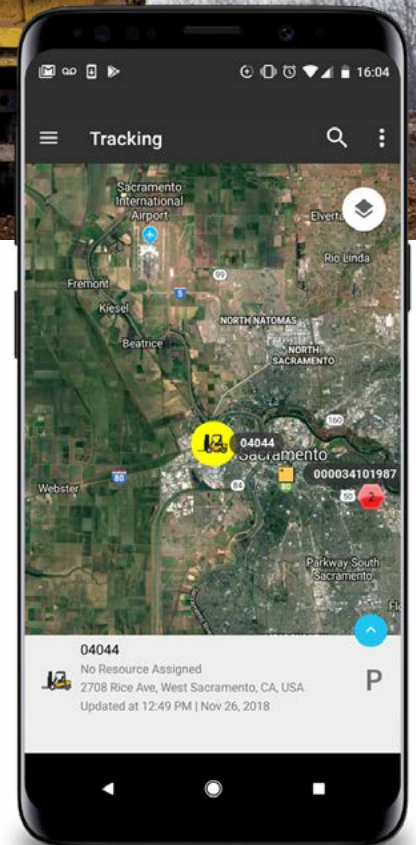


AT&T Fleet Complete for construction companies



Competitive advantages

- Track and manage your mission-critical fleet, assets and workforce with real time tracking, even in remote areas
- Provide outstanding customer service with near real-time job status updates and increase your fleet productivity
- Dispatch the closest available driver with AT&T Enhanced Push-to-Talk

More than just fleet tracking

Powered by state-of-the-art GPS technology, the AT&T Fleet Tracker solution provides you with real-time visibility over your fleet location and vehicle diagnostics data. The Fleet Complete system turns this data into actionable business intelligence that will help you make smart decisions and efficiently manage your fleet.

The in-vehicle devices can be plugged into the OBD-II/CANBUS, J1939 or J1708 connections or hardwired into your vehicles and collect important information such as ignition status and battery voltage, as well as driver behaviors such as speeding, idling, harsh cornering/braking and rapid acceleration.

Business Solutions



Fleet



Asset



Trailers



ELD



Workforce



Tasks



Dashcam



Dispatch



Internet



Integrations

Advanced asset tracking

Designed specifically for tracking high-value equipment and other assets, the AT&T Asset Tracker solution protects your business against unforeseen losses, lowers insurance costs, and helps you run your organization with confidence. Position reporting and unauthorized movement alerts are just two of the system's features that provide fleet managers peace of mind. Instead of worrying about expensive equipment location, you can focus on other essential tasks to help grow your business.

Instant communication with field staff

AT&T Fleet Complete with the AT&T Enhanced Push-to-Talk mobile resource management solution provides an efficient communication add-on to help improve fleet productivity and dispatch operations. Reach out to your field staff or hold a conference with multiple workers in the field with one click.

* Not available on all devices. Refer to your Fleet Complete regional sales manager for available options.

Extensive reporting

Analyze your business intelligence with the comprehensive power reporting and fleet dashboard, or schedule regular operational reports to get a detailed view of your fleet performance, whether captured from GPS, vehicle, sensors, events, or interactions of vehicles with Points of Interest such as service shop, gas stations, or any other location of interest.

25 operational reports include:

- **Reports on asset activity** include such details as average speed, total distance, moving time, ignition status and can be used for comparing submitted worksheets vs real-life data.
- Distance reports cover the total distance traveled by an asset for a given time period, including distance traveled on private roads.
- **Idle report** logs how long assets spend not moving with ignition engaged. Along with power take-off usage report, can be used for accurate fuel tax reporting.
- **Speed reporting and notification** can be used to manage driver behavior and lowering instances of accidents and insurance premiums.
- **And more**, such as position, fleet performance, input, asset temperature, congregation and POI reports

AT&T Fleet Complete key features

Tracking

- **Asset status:** travel direction, ignition status
- Point of interest & locate closest assets
- Trip replay / breadcrumb trail
- **Custom layers:** LSD, private roads

Rules and alerts

- **Hardware malfunction:** antenna, sensors, device
- **Driver behavior:** first ignition, harsh braking/cornering, idle, late departure, outside work hours usage, racing, rapid acceleration
- **Status:** distance, GPS lost, humidity, invalid GPS, crash detection

Reports

- **Hardware:** input, non-transmit, engine status
- **Driver behavior:** activity, congregation, curfew, distance, event, idle, last position, position, speeding, stop, work schedule
- **Operational:** fleet performance, maintenance, messages, POI, PTO usage, time card, trip including fuel economy, unknown movement, unvisited POIs, who was there

Asset management

- **Asset information:** asset name, odometer, license plate, make, model, assigned work schedule
- **Work schedules:** Mon-Fri, specific hours
- **Additional sensors:** temperature, panic button, door/hood
- **Resources:** individual drivers and crews

Location transmission rates

- Location record every 2 minutes
- Transmission into the system 2min/2min for MGS800
- Customizable

Maintenance module

- Unscheduled, annual, recurring date, fixed ODO/op hours, rolling ODO/operating hours, fixed date

Satellite failover

- Satellite Failover solution allows your fleet vehicles to send location snapshots and to be monitored while operating in remote areas that are out of cellular coverage via the kore satellite network.

Contact your Regional Fleet Complete Expert for more information.

Important Information

AT&T Fleet Complete® is only available to customers with a Qualified AT&T business or government agreement and a Foundation Account Number (FAN) and their respective CRUs. Activation of an eligible AT&T wireless rate plan on a compatible device is required. May not be available for purchase in all areas or through all channels. Coverage not available in all areas. Availability, security, speed, timeliness, accuracy and uninterrupted use of service are not guaranteed. Not all features available on all devices. Compatible device required for GPS or a GPS derived location information. Activating data blocking features will result in Cell ID or Enhanced Cell ID location information only. AT&T Fleet Complete® is subject to Complete Innovations' additional terms and conditions, including without limitation its software license. Such terms and conditions are available at <http://www.fleetcomplete.com/end-user-license-agreement-for-fleet-complete/>. Additional hardware, software, services, internet access and/or special network connection may be required. Pricing. Prices do not include taxes or other fees and are subject to change. Rates are not subject to any additional discounts under any AT&T discount plan. Additional credit and eligibility restrictions apply. Additional charges, terms, conditions and restrictions may apply. Offer and pricing subject to change without notice. AT&T privacy policy may be viewed at www.att.com/privacy.