

# Turnkey fleet management solution for School District bus fleets

Student safety while in transport to and from school is the number one priority for parents, schools and school bus drivers. With multiple tasks at hand ensuring everyone's safety on the bus, like pre-trip/post-trip inspections, managing student behavior and driving defensively, the stakes of making a mistake on the job and endangering the passengers are high.

**Fleet Tracker 2 or Cradlepoint Router (IBR1700):** captures vehicle location, engine hours, fuel consumption and data from additional sensors



**Front/back door and stop sensors:** logs every time the door is opened and closed, and the times and location where the stop-arm and lights are engaged



**Driver panic button:** allows a driver to quickly notify stakeholders of an emergency on-board the bus



**Driver Vehicle Inspection Report:** helps streamline Pre/Post-Trip inspections and logs reports for audits



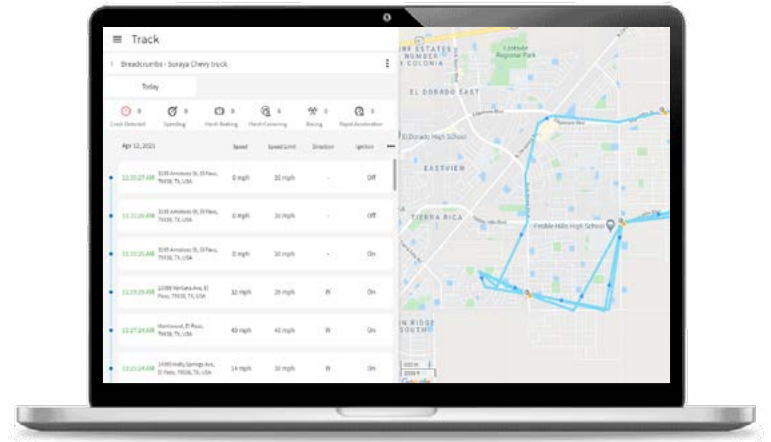
**Enhanced Push-to-Talk:** instant communication with multiple drivers in the field from one screen



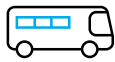
# One integrated platform focused on student safety

AT&T Fleet Complete offers a custom, highly integrated fleet management solution that enables fleet managers and dispatchers to have access to such field intelligence as status of each driver, their vehicle, their location, stop-arm engagement, behavior on the roads, routing information, vehicle inspection and more, allowing them to make smart on-demand decisions and improve fleet safety and efficiency.

AT&T Fleet Complete solutions specifically designed for School Districts allow both fleet managers and drivers to be better equipped to ensure safe transportation for students to and from school, and for parents and school administration to have insight into the bus status on the road.



AT&T Fleet Complete Breadcrumb Trail report



### Track and manage

Monitor mission-critical fleet and workforce in near real-time



### Driver behavior reports

Monitor speeding, idling, harsh braking and hard cornering



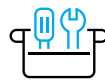
### Compatible with ELD

Automate your driver HOS tracking and comply with ELD



### Optimal engine health

Capture over 20 engine data point and minimize down time



### Quick self or pro install

Install the devices yourself or have one of our certified installers come onsite



### Light or heavy-duty fleets

Scalable for small, medium to large light or heavy-duty fleets and assets



### Vehicle Sensors

Logs the door status and times and location where the stop-arm and lights were engaged.



### Streamline maintenance

Perform DVIRs, log defects and schedule regular maintenance



### Compatible with Add-ons

Manage tasks, resources, dispatching, EPTT, Wi-Fi connectivity and more

## More than just fleet tracking

Powered by GPS technology, the AT&T Fleet Tracker solution provides you with near real-time visibility over your fleet location and vehicle diagnostics data. The Fleet Complete system turns this data into actionable business intelligence that will help you make smart decisions and efficiently manage your fleet.

Feature-rich and versatile AT&T Fleet Tracker integrates with your vehicle's Engine Control Module providing your fleet managers with detailed vehicle status by reporting on 19 different engine data points such as oil level, engine temperature and more.

## Instant communication with bus drivers

Together with a tablet and an in-vehicle tablet mount, AT&T Enhanced Push-to-Talk (EPTT) mobile resource management solution provides an efficient communication add-on to help improve fleet productivity and dispatch operations.

## Digitized vehicle inspections and defect management

Inspect by AT&T Fleet Complete is an automated DVIR solution designed to streamline accuracy and efficiency of school bus pre/post-trip inspections and defect management. Drivers must complete a predefined checklist, log defects and sign off on the report. Defects are logged in the Mechanic's Portal and prompt reminders for service to the driver and the mechanic, ensuring all vehicles are fully operational and safe for the road.

## AT&T Fleet Complete Key Features

### Tracking

- Asset status: travel direction, speed, ignition status
- Stop arm status, front and back door status
- Manage pick-up locations, locate closest assets
- Trip replay / breadcrumb trail
- Custom layers: private roads, weather, traffic, localized maps, bus routes

### Rules, alerts and reports

- Driver behavior: first ignition, harsh braking/cornering, idle, late departure, outside work hours usage, racing, rapid acceleration
- Status: distance, GPS lost, humidity, crash detection
- Super rule: trigger of combination of 2 rules together
- Operational reports: engine status, fleet performance, maintenance, messages, POI, PTO usage, time card, trip report with fuel economy, unknown movement, unvisited POIs, who was there

### Asset management

- Vehicle information: asset name, odometer, license plate, make, model, assigned work schedule
- Additional sensors: temperature, panic button, door/hood
- Resources: individual drivers and crews

### Maintenance module

- Unscheduled, annual, recurring date, rolling odometer, etc

### Important Information

AT&T Fleet Complete ("Fleet Complete") as described herein is available to AT&T's qualified customers participating in AT&T's contract with NASPO ValuePoint. AT&T Fleet Complete is subject to the terms and conditions of the NASPO ValuePoint Agreement, and applicable Sales Information. For qualified customers on the NASPO ValuePoint Agreement: Any Additional Product Terms not allowable under applicable law will not apply, and the NASPO ValuePoint Agreement will control in the event of any material conflict between the NASPO ValuePoint Agreement and the Additional Product Terms. Pricing. Prices do not include taxes or other fees and are subject to change. Rates are not subject to any additional discounts under any AT&T discount plan. Additional credit and eligibility restrictions apply. Additional charges, terms, conditions and restrictions may apply. Offer and pricing subject to change without notice. AT&T privacy policy may be viewed at [www.att.com/privacy](http://www.att.com/privacy).

04/12/21

© 2021 AT&T Intellectual Property. AT&T, Globe logo are registered trademarks and service marks of AT&T Intellectual Property and/or AT&T affiliated companies. All other marks are the property of their respective owners.